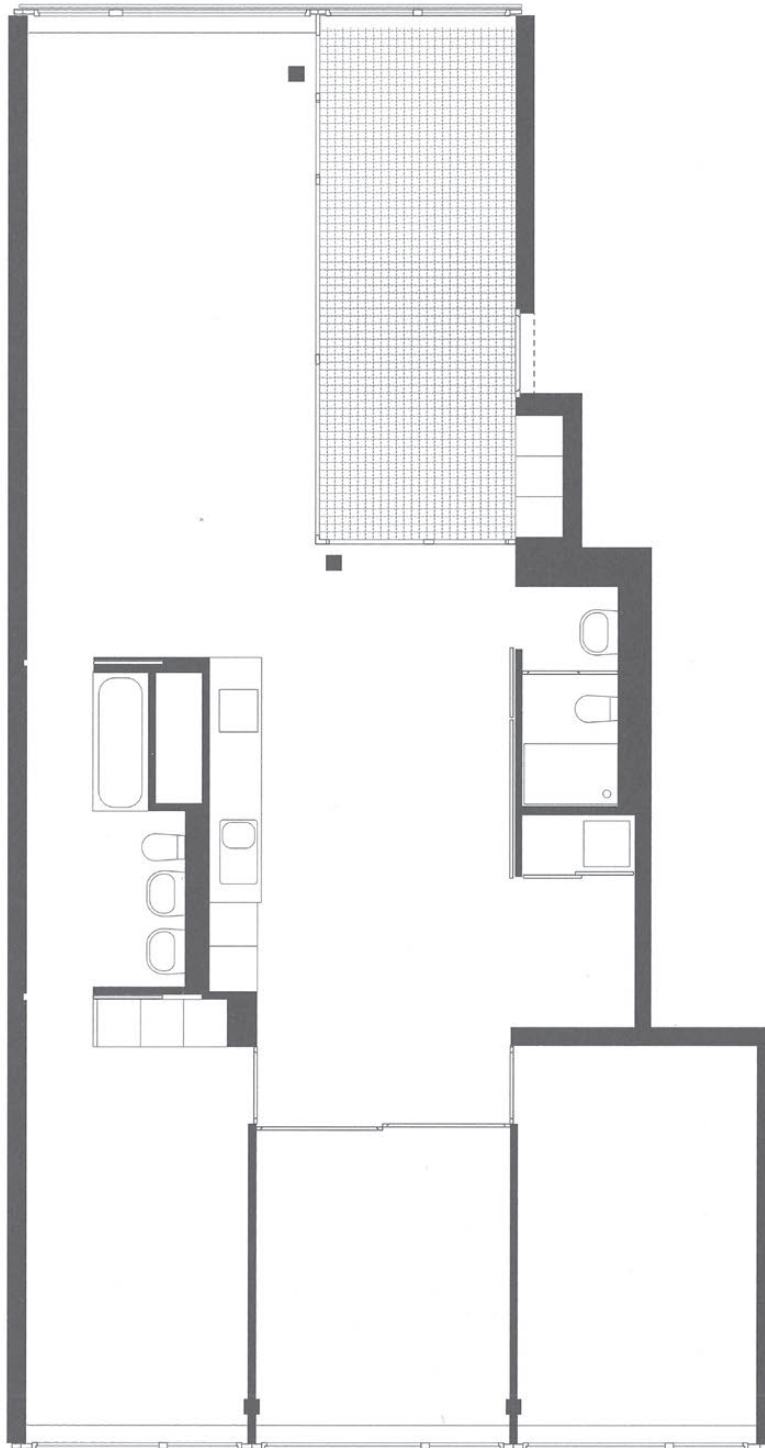


21

“Paths, zoning, thresholds
and changes of material
serve a structuring role and
are an important part of our
architectonic vocabulary.”

Diener Areal
Adrian Streich
Student group: Eva Beham and Anna Gonchar



Apartment on the first floor 1:100





A sequence of unusually deep rooms:
entrance, conservatory space, kitchen and another conservatory.



A deep conservatory space gives the apartment an individual and unexpected entrance.